

Greenway Usage 2009-2014

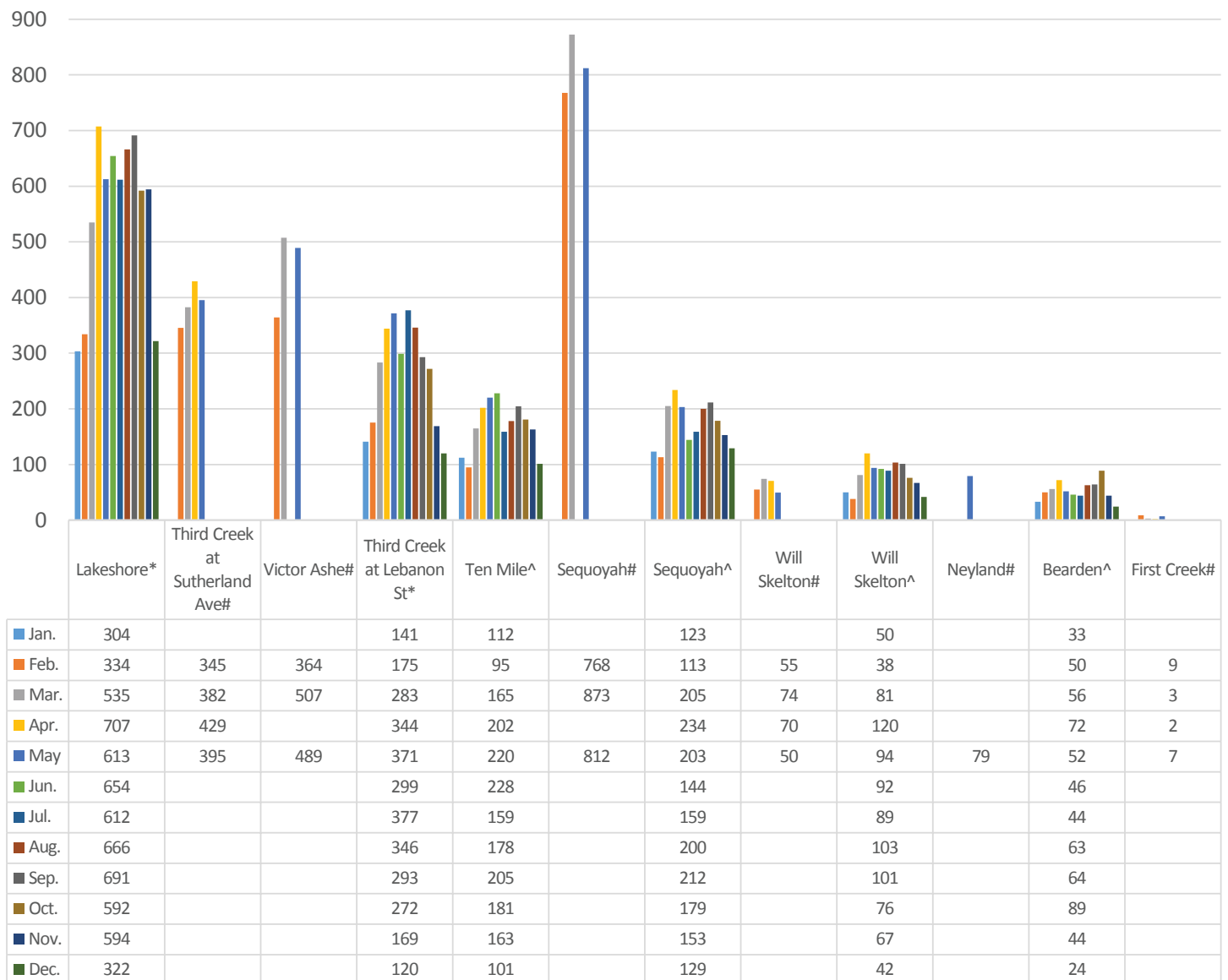
Several greenways in Knoxville have been outfitted with counters to track usage of the greenways. These charts depict some of the data collected since 2009. The data are used for planning purposes, grant applications and academic research.

Between 2012 and 2014, the original batch of laser greenway counters were replaced with infrared counters. Gaps in the data are the result of this switch to a new greenway counter system. In some cases, the counters were moved from one location to another on the same greenway. These changes are reflected in the charts. The exact location of counters is not specified in order to prevent tampering with counters.

The counters collect hourly data. They do not distinguish between pedestrians, bicyclists or other types of greenway users.



Average Daily Greenway Use by Month



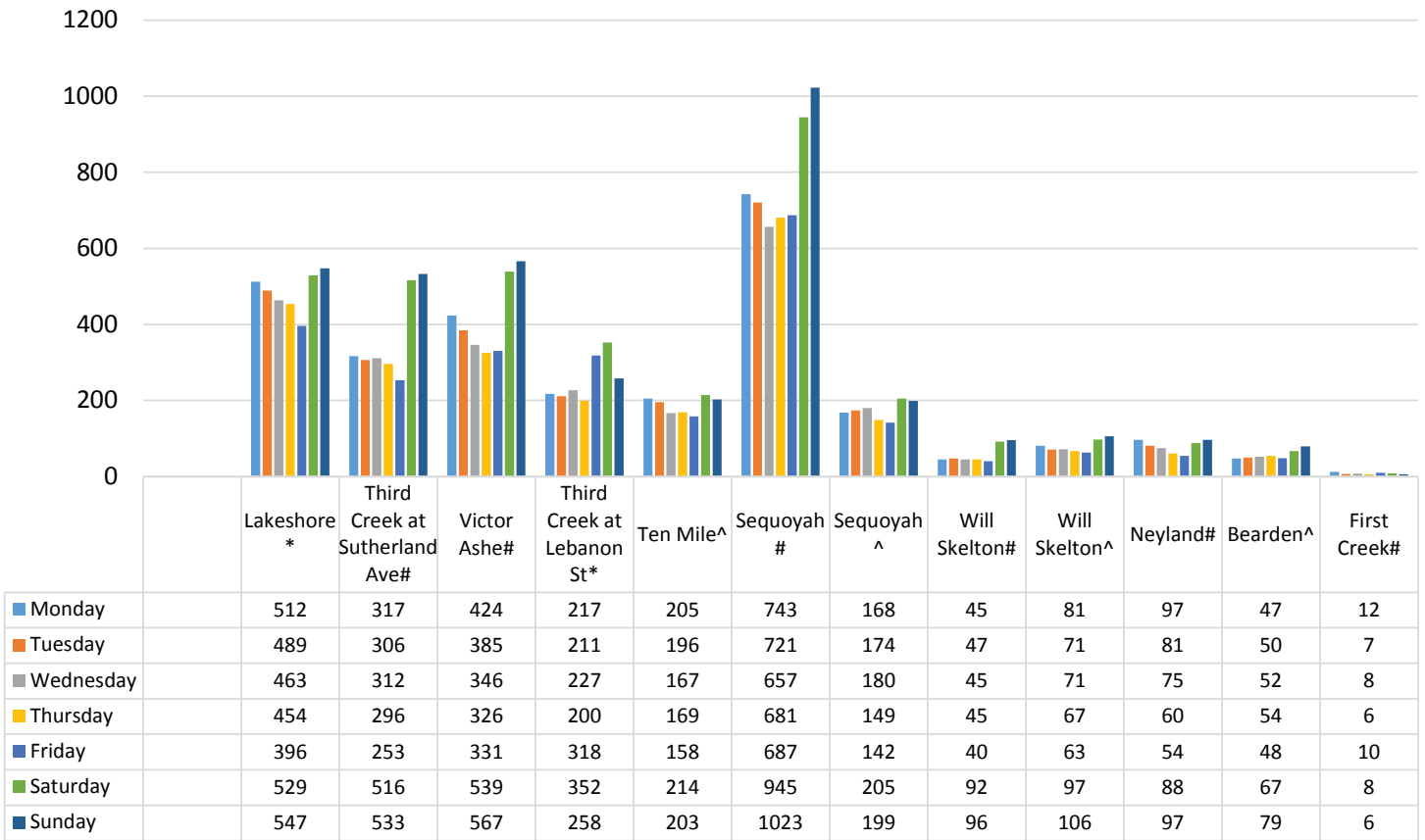
Greenway Counter Locations

*=data are from Jan. 2009-Aug. 2012 & Feb.-May 2014

#=new greenway counter location; data are from Feb.-May 2014

^=out-of-use greenway counter location; data are from Jan. 2009-Aug. 2012

Average Daily Greenway Use by Day of Week



Greenway Counter Locations

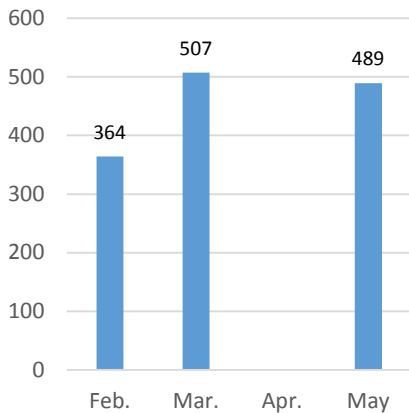
* = data are from Jan. 2009-Aug. 2012 & Feb.-May 2014

= new greenway counter location; data are from Feb.-May 2014

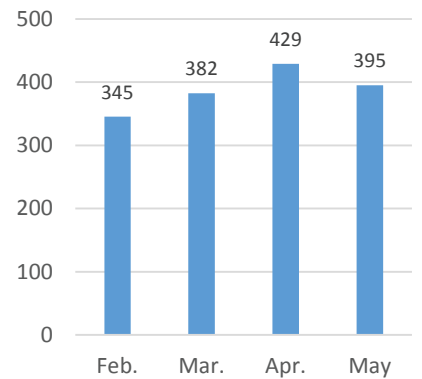
^ = out-of-use greenway counter location; data are from Jan. 2009-Aug. 2012



Average Daily Use of Victor Ashe Greenway
(2014 data)

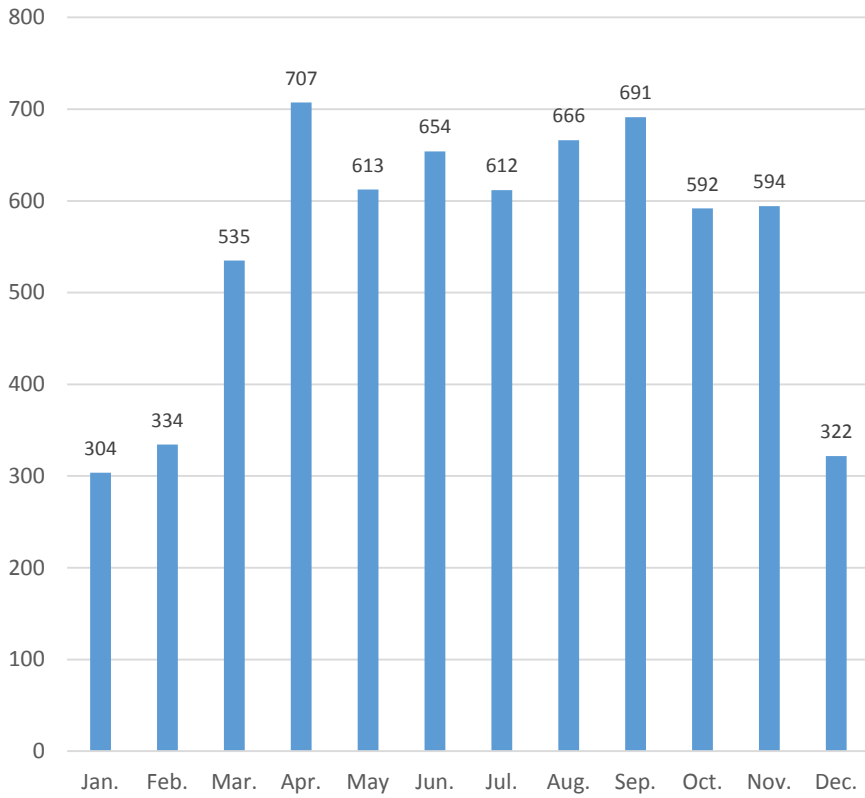


Average Daily Use of Third Creek Greenway at Sutherland Ave
(2014 data)

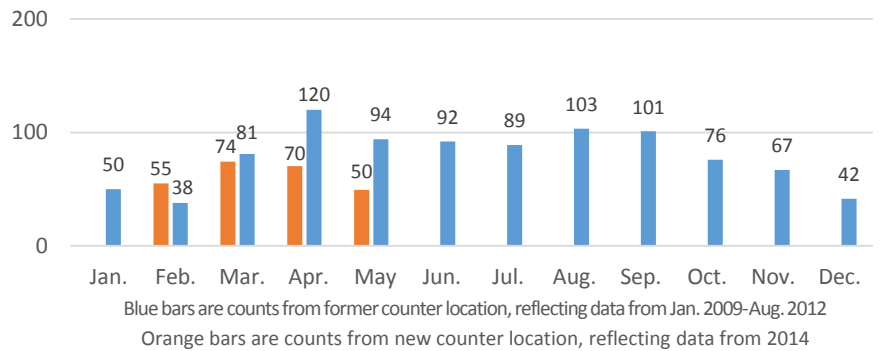


Average Daily Use of Lakeshore Greenway by Month

(data from Jan. 2009-Aug. 2012 & Feb.-May 2014)

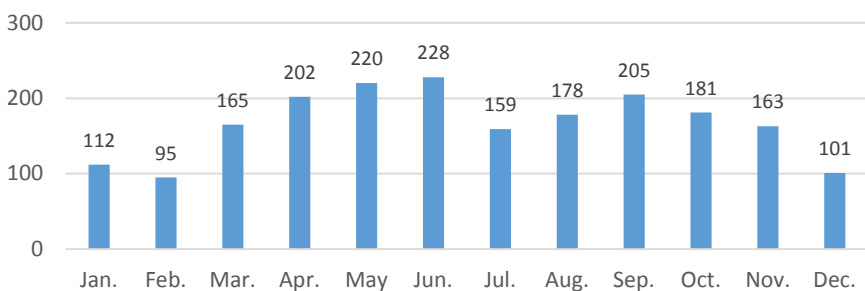


Average Daily Use of Will Skelton Greenway

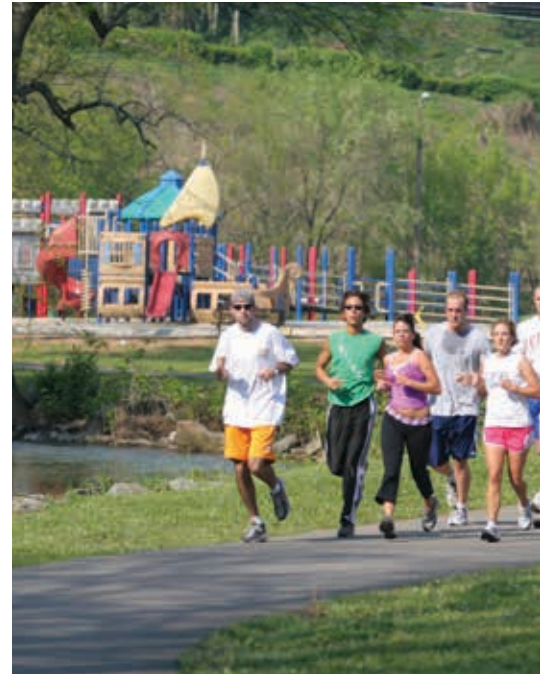
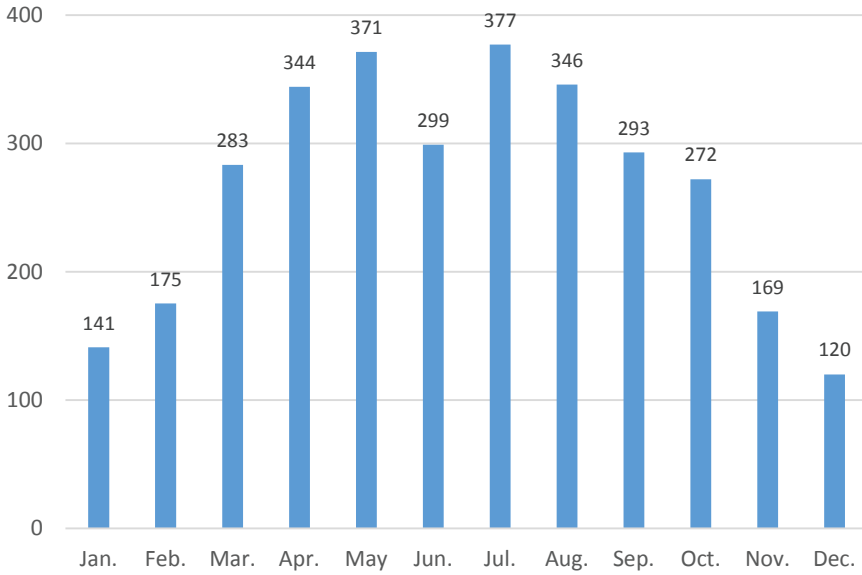


Average Daily Use of Ten Mile Greenway

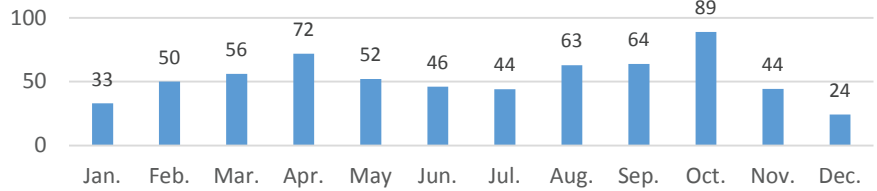
(data from Jan. 2009-Aug. 2012)



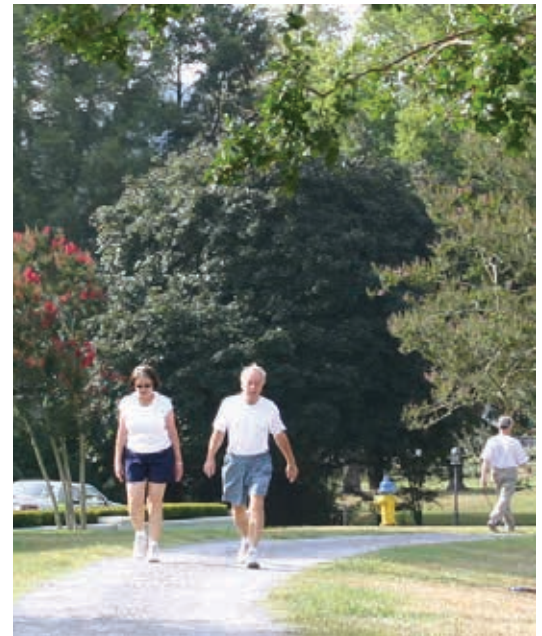
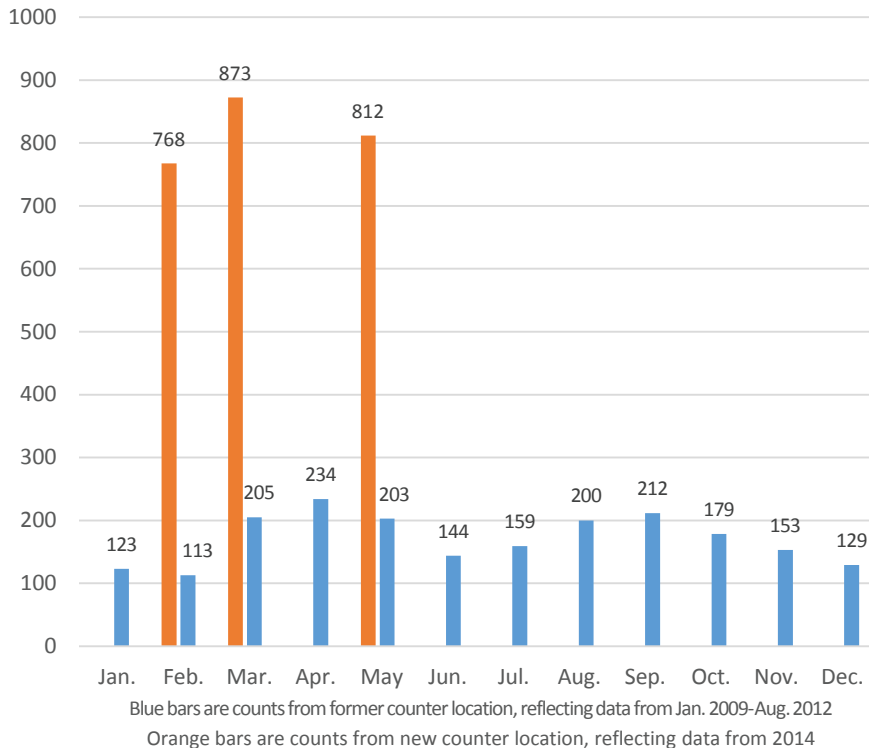
Average Daily Use of Third Creek Greenway at Lebanon St. by Month
 (data from Jan. 2009-Aug. 2012 & Feb.-May 2014)



Average Daily Use of Bearden Greenway
 (data from Jan. 2009-Aug. 2012)



Average Daily Use of Sequoyah Greenway



The greenway counter program is a partnership of the [City of Knoxville Parks and Recreation Department](#), the [Knoxville Regional TPO](#), and the [University of Tennessee Department of Kinesiology, Recreation, and Sports Studies](#).